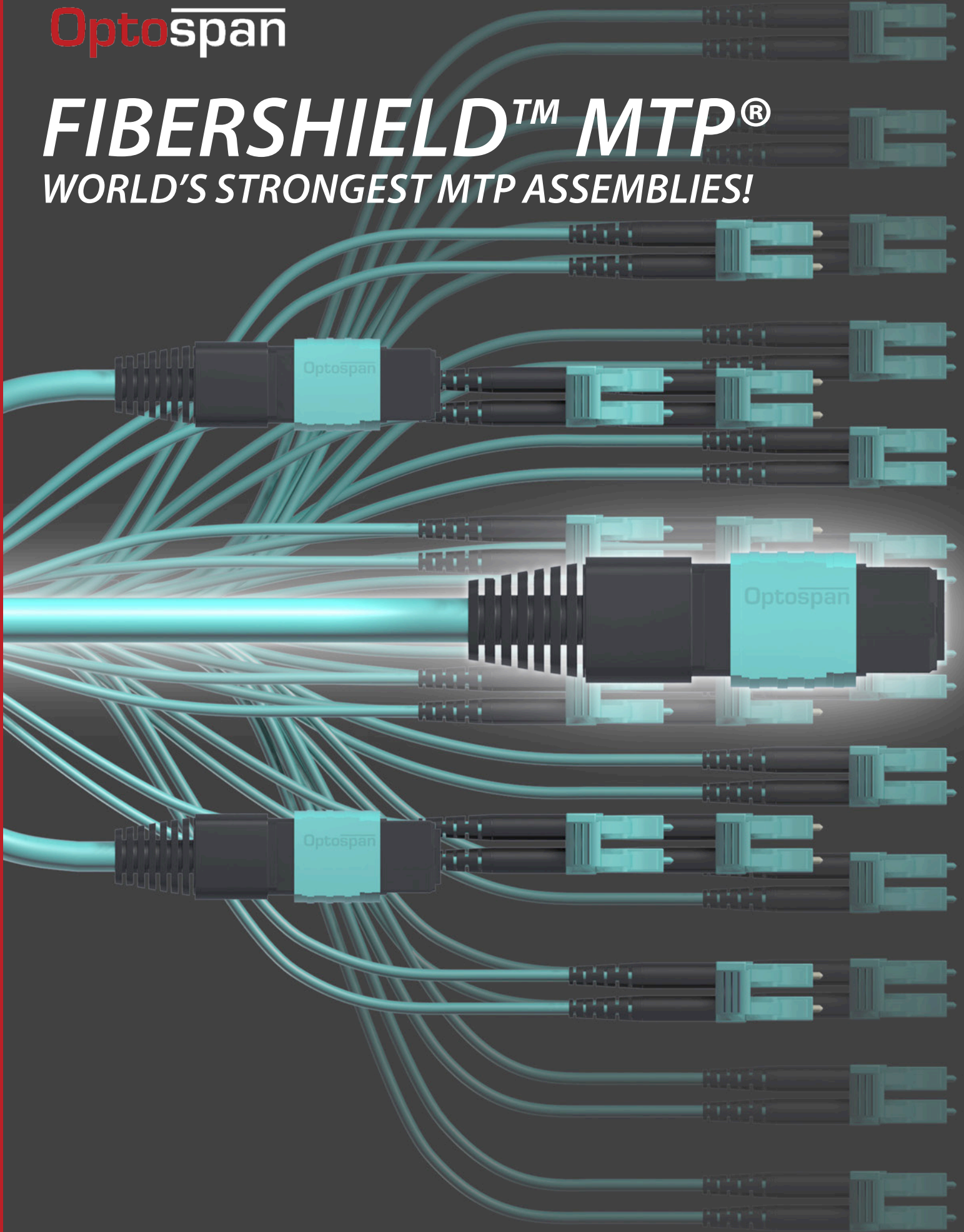


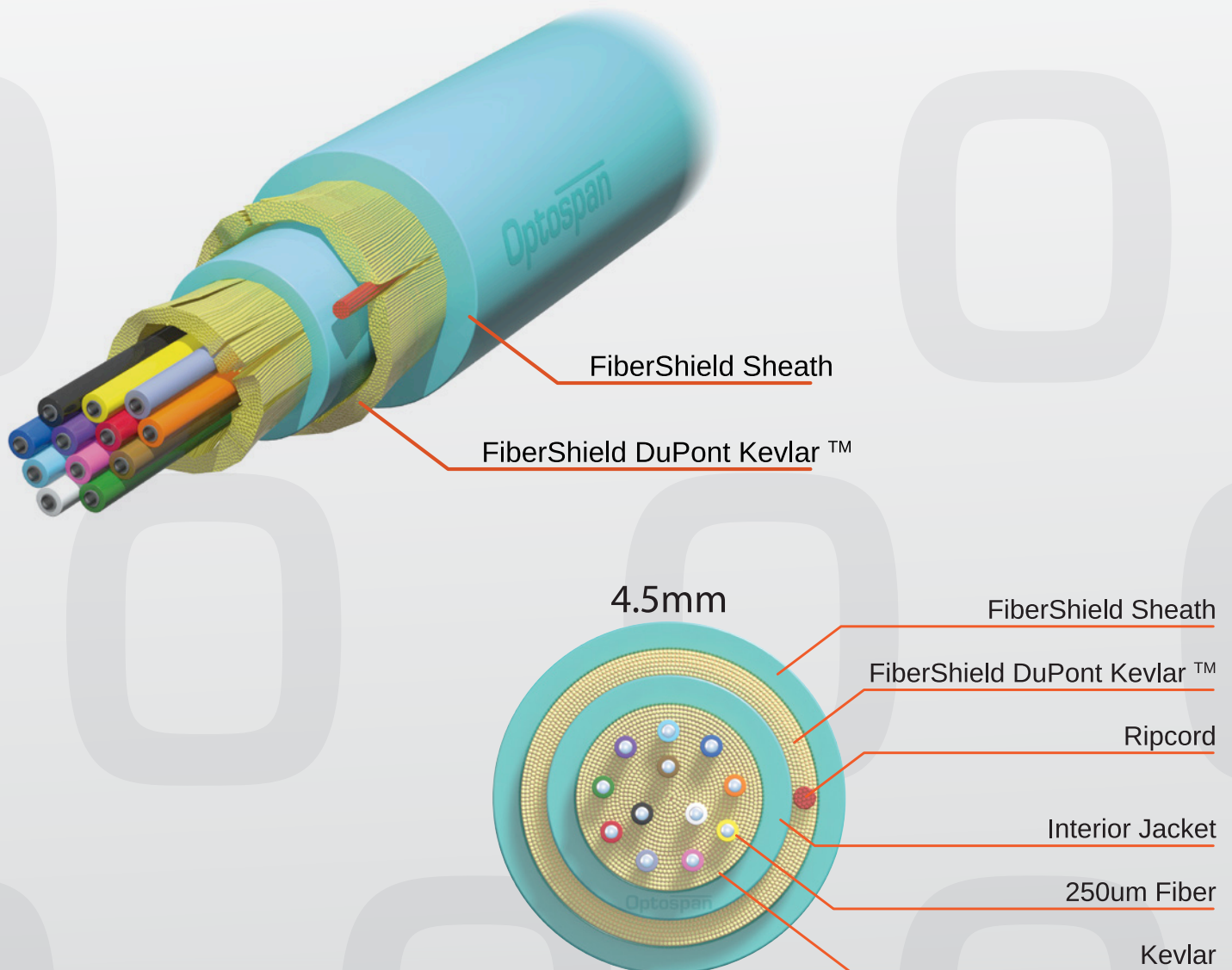
Optospan

# FIBERSHIELD™ MTP®

WORLD'S STRONGEST MTP ASSEMBLIES!



# OPTOSPAN EXCLUSIVE FIBERSHIELD™ CABLE



## It's all about Quality!

- 5x Stronger than ordinary cables!
- US Conec MTP® housing & MT ferrule
- Individual serial number and test report
- ISO 14000 clean room manufacturing

# DATA CENTER MTP® CABLES\*

## MTP INTERCONNECT/TRUNK CABLE (8, 12 OR 24 FIBERS)

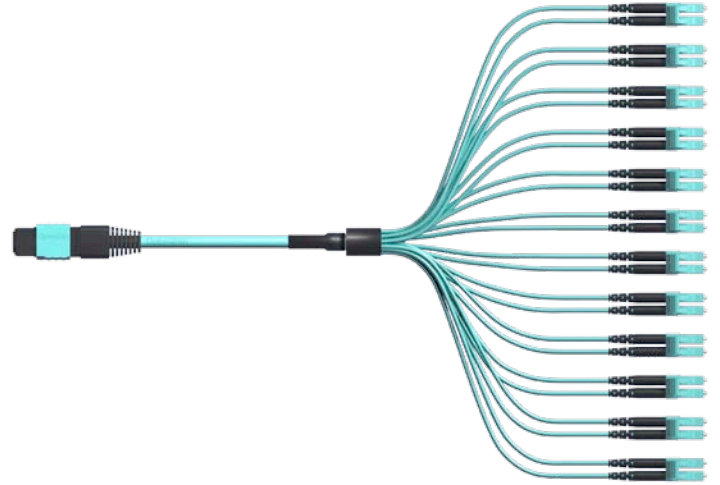
Typical Use:

- 8 Fiber for QSFP/QSFP100 to QSFP/QSFP100
- 12 Fiber for connections between patch panels
- 24 Fiber for CFP/CXP/CPAK to CFP/CXP/CPAK



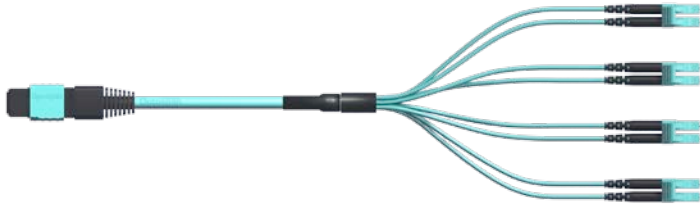
## CFP/CXP TO SFP+ 24 FIBER MTP HARNESS

Typical Use: Aggregation of 10x10G SFP+ to 1x100G CFP/CXP for 10G to 100G migration



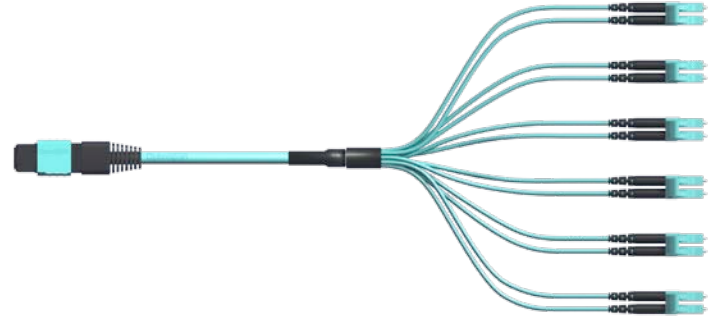
## QSFP TO SFP+ 8 FIBER MTP HARNESS

Typical Use: Aggregation of 4x10G SFP+ to 1x40G QSFP+ for 10G to 40G migration



## 12 FIBER MTP HARNESS

Typical Use: Consolidation of 6 duplex LC cables into one MTP cable.



## MTP TRUNK HARNESS

Typical Use: Consolidate multiple MTP trunks for high density applications



Optional: MTP Push/Pull Tab connectors available for easy insertion and extraction of MTP® connectors in high density applications

\* Custom configurations available

# SPECIFICATIONS

## MTP FIBERSHIELD (8F, 12F, 24F) CABLE SPECIFICATIONS

ITEM	UNIT	SPECIFICATION
<b>SINGLE-MODE FIBER</b>		
Attenuation	dB/km	1310nm ≤ 0.4 1550nm ≤ 0.3
Dispersion	Ps/nm.km	1285 ~ 1330nm ≤ 3.5 1550nm ≤ 18.0
<b>MULTIMODE OM3/OM4 FIBER</b>		
Attenuation	dB/km	850 nm ≤ 3.5 1300 nm ≤ 1.5
<b>SINGLE-MODE &amp; MULTIMODE FIBER</b>		
Nominal Outer Diameter	mm	4.5
Proof test	kspi	≥ 100
Temperature Range	°C	-20 °C— +60 °C
Nominal Weight	g/m	24
Min. Bending Radius (mm)    Install	nm	20D
Min. Bending Radius (mm)    Static	nm	10D
Max. Tension (N)    Short-term	N	400
Max. Tension (N)    Long-term	N	130
Max. Resistance (N/100mm <sup>2</sup> )    Short-term	N/100mm <sup>2</sup>	1000
Max. Resistance (N/100mm <sup>2</sup> )    Long-term	N/100mm <sup>2</sup>	200

## MTP CONNECTOR SPECIFICATIONS

### MULTIMODE MTP® OPTICAL SPECIFICATIONS

	MTP	MTP ELITE
Insertion Loss	0.20 dB Typical (All Fibers) 0.60 dB Maximum (Single Fiber)	0.10 dB Typical (All Fibers) 0.35 dB Maximum (Single Fiber)
Optical Return Loss	> 20dB	> 20dB

### SINGLE-MODE MTP® OPTICAL SPECIFICATIONS

	MTP	MTP ELITE
Insertion Loss	0.25 dB Typical (All Fibers) 0.75 dB Maximum (Single Fiber)	0.10 dB Typical (All Fibers) 0.35 dB Maximum (Single Fiber)
Optical Return Loss	> 60 dB (8° Angle Polish)	> 60 dB (8° Angle Polish)

### PHYSICAL MTP® SPECIFICATIONS

	MULTIMODE	SINGLE-MODE
Operating temperature	- 40 C to + 80 C	- 40 C to + 80 C
Durability	1000 mating cycles < 0.2 dB change	500 mating cycles < 0.3 dB change

# OPTOSPAN MTP PRODUCTS & ACCESSORIES

---

## MTP PATCH PANELS



Ultra Elite series



Ultra Density series



High Density series

---

## CASSETTES



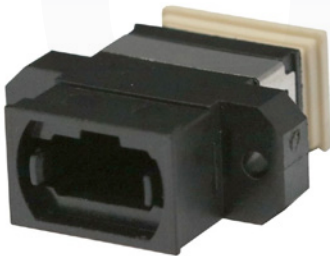
High Density series



Ultra Elite series

---

## MTP/MPO ADAPTERS



Key-up to Key-down  
Key-up to Key-up

---

## MTP/MPO TESTER



MTP/MPO  
Cable Tester

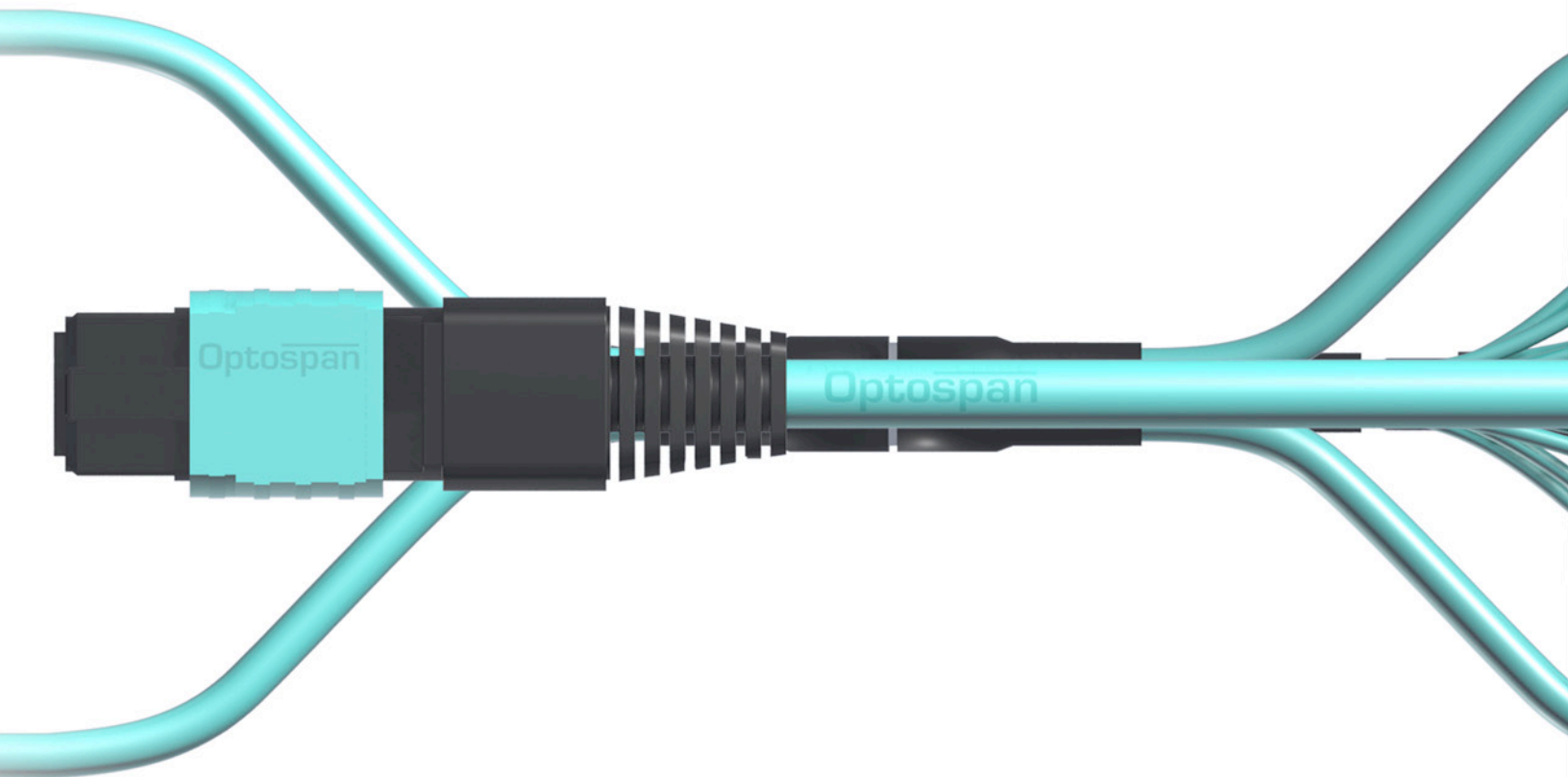
---

## MTP/MPO CLEANERS



MTP/MPO  
Connector Cleaners

# Optospan



**Corporate Headquarters**

**OptoSpan**

50 Alexander Court  
Ronkonkoma, NY 11779

Tel: (877) 819-0484

Inquiries: [sales@optospan.com](mailto:sales@optospan.com)

[www.OptoSpan.com](http://www.OptoSpan.com)

**Associated Standards:**

Meets IEC Standard 61754-7,

Meets TIA/EIA 604-5 Type MPO,

Structured cabling per TIA-568-C