

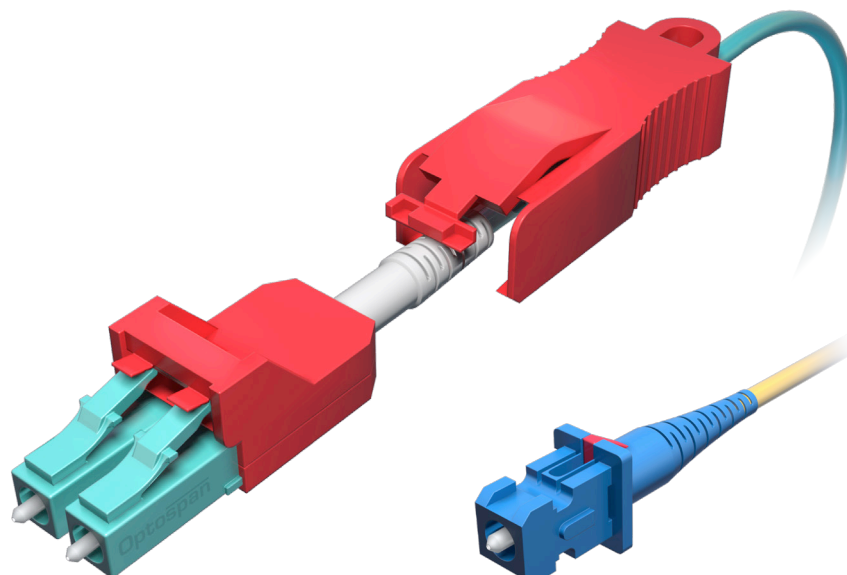
## SECUREFLEX LOCKING FIBER CABLES

### A UNIQUE TAMPER PROOF SOLUTION

PLUG INTO ANY CONVENTIONAL  
WALL JACK, PANEL OR TRANSCEIVER

OptoSpan's SecureFlex™ Locking Fiber Cables are designed to prevent unauthorized and/or inadvertent changes in highly sensitive applications such as Datacenters and Secure IT networks. These locking cables plug into any conventional adapters or panels, but can only be disconnected using a matching colored coded key.

The SecureFlex Locking cables also feature a higher performance Ultra Low-loss LC ferrule which reduces the insertion loss (IL) to less than .09dB (ordinary IL is .30dB) and the new 360° flex angle boots which solve the congestion problems that naturally occur when hundreds of fibers terminate at one small patch panel.

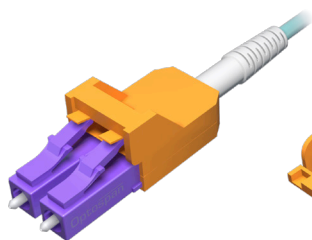


**SecureFlex-LC**  
Locking Connector

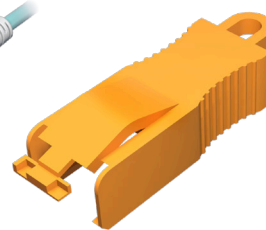
**SecureFlex-SC**  
Locking Connector



### SECUREFLEX-LC LOCKING CABLE WITH KEY



Locking LC Cable



Color Coded Key



Extraction Tool

## TECHNICAL SPECIFICATIONS

### SECUREFLEX-LC CONNECTOR

	IL AGAINST MASTER (DB)		IL RANDOM MATING (DB)	
	Average IL	Maximum IL	Average IL	Maximum IL
Solid Body Low Loss SM	0.05	0.15	0.07	0.15
Solid Body Low Loss APC SM	0.07	0.15	0.09	0.20
Solid Body Low Loss MM	0.05	0.15	0.07	0.15
Operating Temperature	-40°C to +75°C			
Durability	<math><0.2\text{dB}</math> typical change, 500 matings			

### CLEARCURVE® OM4 FIBER

Attenuation		Macrobend Loss			
Wavelength (nm)	Maximum Value (dB/km)	Mandrel Radius (nm)	Number of turns	Induced Attenuation (db)	
				850 nm	1300 nm
850	≤ 2.3	37.5	100	≤ 0.05	≤ 0.15
1300	≤ 0.6	15	2	≤ 0.1	≤ 0.3

Note: Exceeds Verizon FOC TPR 9409 and IEC61300-3-34 Grade A random mating requirements.

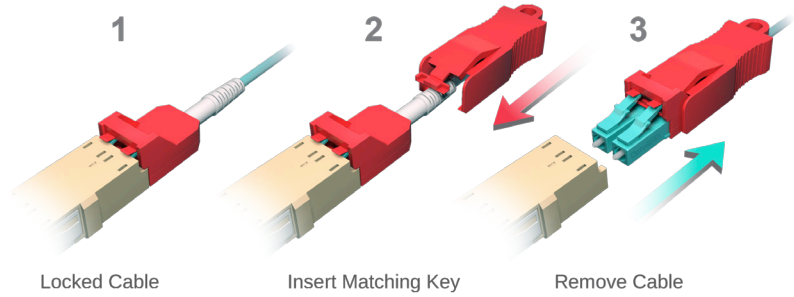
# TECHNICAL SPECIFICATIONS

## CORNING SMF-28E+ OS2 FIBER

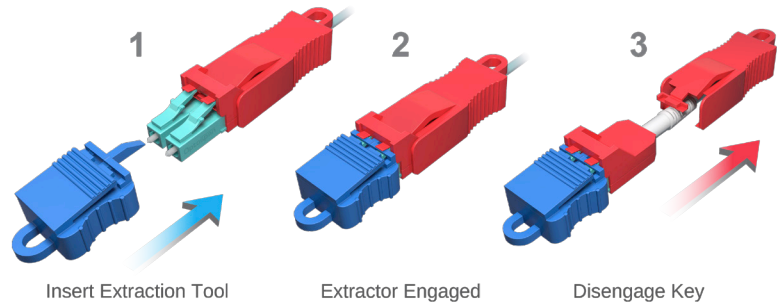
Maximum Attenuation		Macrobend Loss			
Wavelength (nm)	Maximum Value* (dB/km)	Mandrel Diameter (mm)	Number of Turns	Wavelength (nm)	Induced Attenuation * (dB)
1310	0.33-0.35	50	100	1310	<= 0.05
1550	0.19-0.20	50	100	1550	<= 0.05
<b>Outer Diameter</b>	3.0mm ±0.2mm				

## SECUREFLEX CABLES SIMPLE LOCKING AND UNLOCKING PROCESS

**STEP 1.**  
REMOVE CABLE USING A MATCHING KEY



**STEP 2.**  
DISENGAGE KEY FROM CABLE



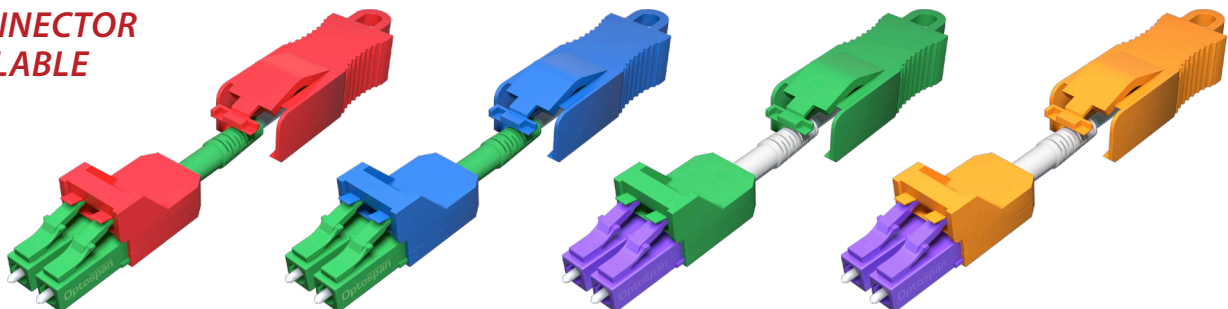
## FEATURES

- Once connected, cables can only be removed by using the keyed tool
- 4 key combinations with separate colors
- Plugs into standard LC adapters & transceivers
- Compact Uni-body Duplex format

## APPLICATIONS

- Military and Federal networking
- High Density Patching Applications
- Highly Sensitive Data Centers
- Tamper Proof Networks

## 4 KEYS/CONNECTOR PAIRS AVAILABLE



Note: The SECUREFLEX cables exceeds Verizon FOC TPR 9409 and IEC61300-3-34 Grade A random mating requirements.