

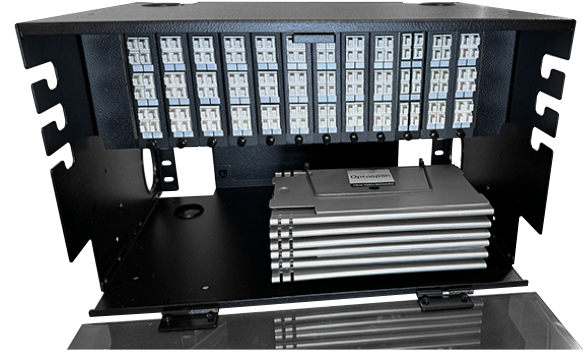
6U Fiber Enclosure

288 Port - Rack Mount Splice & Termination Panel Ultimate Serviceability and Manageability

OptoSpan's RM-288 Rack Mount Termination and Splicing Enclosures provide a convenient, secure and organized housing for fiber optic connections and terminations, as well as a central point for splicing fiber optic cables for data center and telecom applications.

This RM-288 patch panel has two sections for fiber optic cable entry and exit. It can be pre-configured with up to 24 MTP-LC cassettes, up to 288 pass-through LC, MDC, MMC, SN, SC, ST, or FC ports, and up to 144 fiber splicing capacity.

Splice trays, pigtails, and multi-fiber (MTP/MPO) cables are available as optional accessories and can be pre-configured for use with this panel.

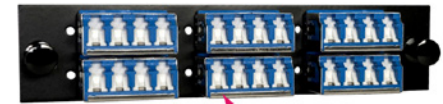


Exclusive Feature:

IP5x Rated LC Adapter Panels with Automated Dust Shield

The OptoSpan Select Series Patch Panels feature exclusive LC, MDC, MMC, and SN Adapters with an IP5x compliant 100% Automatic Dust Shield to keep the fiber optic cables clean and prevent network failures. No dust caps required!

"The leading cause of packet corruption and link downtime in the fiber optic network are the contaminated connectors."



Automatic Dust Shield

Key Features and Benefits:

Compact Design	6 rack-unit 10.5" high (6U)
Splice and Termination Enclosure	Flexibility of cable termination or splicing in a single panel
Compatible with full line of OptoSpan HD Series Cassettes and Adapter Panels	Choose from the OptoSpan Select Series modules, such as (24) MTP-LC cassettes, (24) 12F/24F pass-through LC, MDC, MMC, SN, SC, ST, or FC adapter panels, or six (6) Splice Trays
Compatible with OptoSpan Armored and Non-Armored Cables	Simple to integrate this panel with SteelFlex and SteelPatch Armored and Non-Armored cables, enabling reliable networks
Easy Access to Cables/Adapters	Front and rear access
Included Cable Management Accessories	Improve the identification and upkeep of cables and connectors
Turn-key Pre Installed Option	To save time in the field, panels can be delivered pre-installed with MTP-LC cassettes, adapter panels, or pigtails
Made in USA	Made in the USA from the finest components to ensure years of dependable use

LC



MDC



MMC



SN



Dimensions:	10.5"H x 17"W x 12"D (19lbs)
--------------------	------------------------------



Splice Trays

Maximum Capacity:	
MTP-LC Cassettes:	Qty. 24 (12F/24F) High Density MTP-LC Cassettes
Termination (Pass-through):	Qty. 24 (12F/24F) High Density Series Adapter Panels. LC, MDC, MMC, or SN Adapters. See below table. SC, FC & ST available upon request.
Splicing:	Qty. 6 (12F/24F) 10" Splice Trays

Available Configurations
(SC, ST, FC Adapters Available)

<i>OptoSpan RM Series Panel Specifications and Max Capacity</i>							<i>Pre-Terminated Fiber Cable Compatibility with RM Series Panels</i>			
Model	#Type	# Slots	Max. Fibers	# HD Series Cassettes	# Select Series Panels	# Splice Trays	Steel Flex-IP68	Steel Max-IP68	Steel Patch-IP68	TPU-IP68
		Incl.	Incl.	Opt.	Opt.	Opt.	Opt.	Opt.	Opt.	Opt.
RM-36-LC	LC	3	72	3	3	3/12F	✓	✓	✓	✓
RM-72-LC	LC	6	144	6	6	4/24F	✓	✓	✓	✓
RM-144-LC	LC	12	288	12	12	6/24F	✓	✓	✓	✓
RM-288-LC	LC	24	576	24	24	6/24F	✓	✓	✓	✓
RM-36-MDC	MDC	3	216	0	3	0	✓	✓	✓	✓
RM-72-MDC	MDC	6	432	0	6	0	✓	✓	✓	✓
RM-144-MDC	MDC	12	864	0	12	0	✓	✓	✓	✓
RM-288-MDC	MDC	24	1728	0	24	0	✓	✓	✓	✓
RM-36-MMC	MMC	3	1296	0	3	0	✓	✓	✓	✓
RM-72-MMC	MMC	6	2592	0	6	0	✓	✓	✓	✓
RM-144-MMC	MMC	12	5184	0	12	0	✓	✓	✓	✓
RM-288-MMC	MMC	24	10368	0	24	0	✓	✓	✓	✓
RM-36-SN	SN	3	144	0	3	0	✓	✓	✓	✓
RM-72-SN	SN	6	288	0	6	0	✓	✓	✓	✓
RM-144-SN	SN	12	576	0	12	0	✓	✓	✓	✓
RM-288-SN	SN	24	1152	0	24	0	✓	✓	✓	✓



© 2025 OptoSpan. All Rights Reserved. Specifications may change without notice. Images are for illustrative purposes only.